

Simulation Activities

Collaborative learning

- Engage in peer observation
- Engage in joint research
- Reflect with colleagues
- Design pupil involvement activities

Communication

- Talk with individuals
- Talk with individuals again
- Organise launch event

Leadership and facilitation

- Leadership and teamwork development
- Secure outside support
- Identify key individuals

Structures

- Develop network structures and ground rules
- Revise budget and staffing, policy priorities etc.
- Create a resource library
- Address time, space and resource issues

Share network learning

- Offer demonstrations of new network practices
- Communicate to stakeholders
- Conference presentation

Capacity

- Build within school capacity
- Build trust
- Carry out staff survey or interviews

Use evidence and self evaluate

- Engage in data analysis
- Identify well-evidenced pedagogical approaches
- Document successes and failures, share learnings
- Check effectiveness of project implementation
- Celebrate successes

Purpose/focus

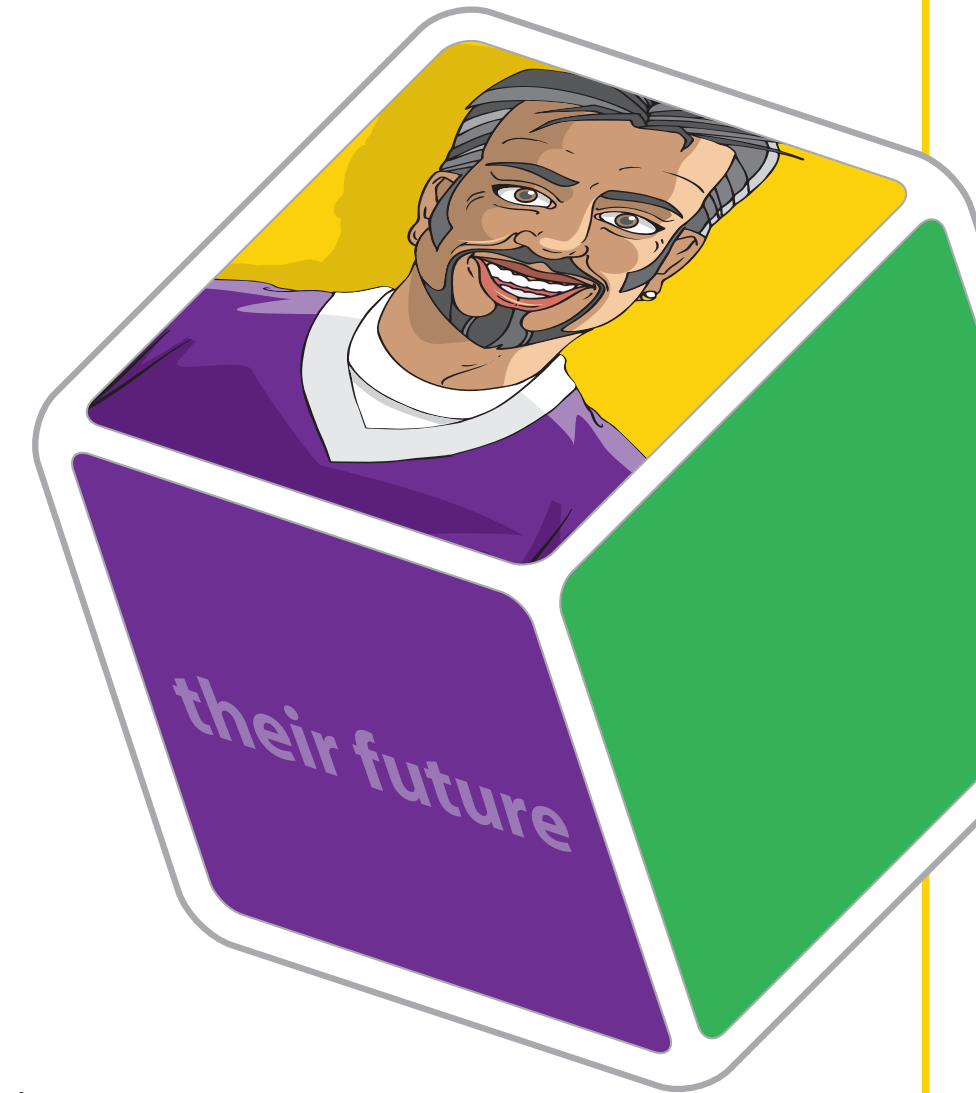
- Sharpen learning focus
- Create common purpose
- Specify learning focus
- Revisit learning focus and common purpose
- Identify network projects
- Compare learning focus to current reality

Additional information

- Schools' past history
- Social relationships

Learnings into practice

- Use new learning and teaching strategies regularly
- Import and spread network enquiry/knowledge within school
- Practice and refine new learnings



Networking for Learning

A learning tool to support primary school collaboration



innovation

In partnership with **NCSL**
National College
for School Leadership